

# RENTAL SKINS AND MEDALLIONS

SEE REVERSE FOR STAMP PATTERNS



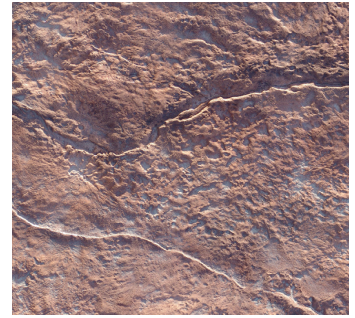
River Stone · E, R



Heavy Stone · E, R, S



Rough Stone · E, R



Old Granite · E, M



Belgium Slate · E, M



Italian Slate · E, R



Roman Slate · E, R



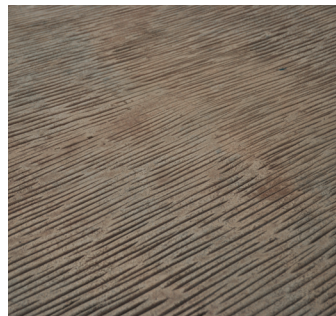
Desert Slate · E, R



Renaissance Slate · E, R



Fractured Earth · E, R, M



Casa Rubio · S



Flaming Sun Medallion · E, R

## LOCATION KEY

Call in advance for rental availability

**E** - Eagan (651) 905-1500

**M** - Mankato (507) 345-7773

**R** - River Falls (715) 425-1119

**S** - St. Cloud (320) 251-6031



Compass Medallion · E, R, M



# RENTAL STAMPS

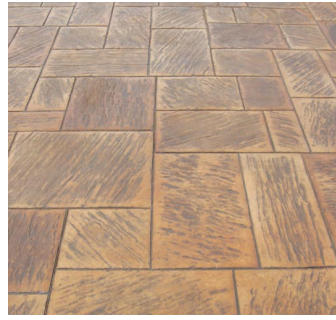
SEE REVERSE FOR SKIN AND MEDALLION PATTERNS



American Ashlar Slate · E, R



Ashlar Cut Slate · E



Fractured Cyprus Slate · E, R, S



Random Fractured Slate · E, M



Regal Ashlar · E



Ashlar Stone Random · E, M



English Yorkstone · E, M, S



Stones of Athens · E, R, S



London Cobblestone · E, R, M



Random Cobblestone · E, R, M



Rough Cut Ashlar · R



New Brick Running Bond · E, M, S



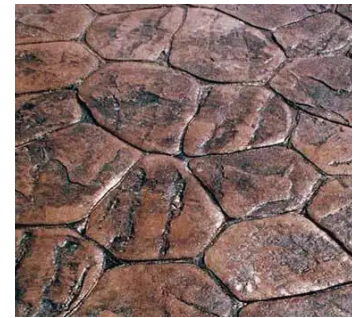
6" Pine Plank · S



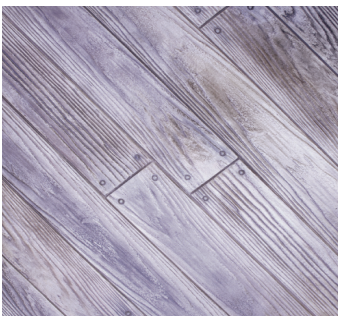
6" Classic Wood Plank w/Nails · E



Canyon Stone · E, M



Random Stone · E



6" Random Boardwalk · E, M



12" Weathered Wood · R



Images shown represent the finished pattern. The finished in-place concrete will be affected by the concrete mixture including: materials selected, finishing techniques, curing and sealing methods, and additional factors such as weather conditions. Availability of items vary by location. Please call in advance to set up your rental.